

IPC Series Crash Damper

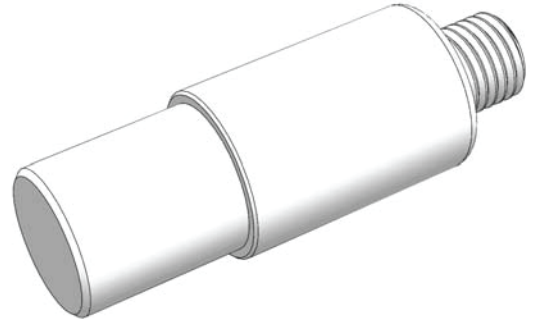
NEW

IZMAC Plastic Type Crash Damper

DESCRIPTION

IPC is a disposable damping product that absorbs high energy by being made of heterogeneous engineering plastics, and it has a structure that converts kinetic energy from impact into deformation energy.

We provide damping solutions to meet the best performance in various industries. This product is suitable for emergency purpose.

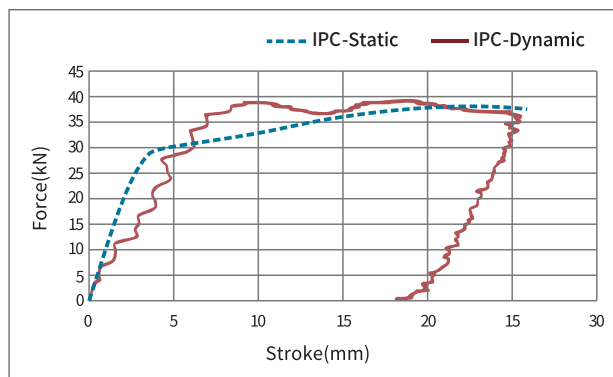


FEATURES

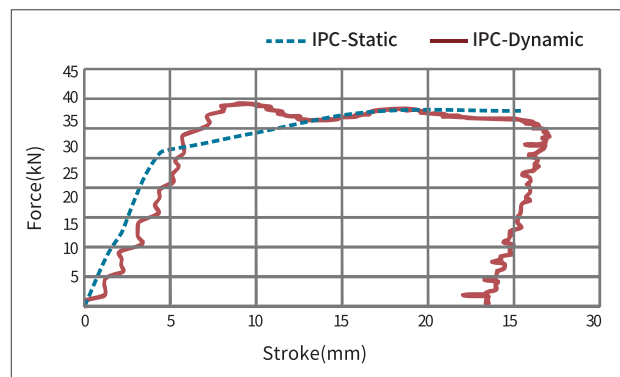
- 1 High deceleration performance.
- 2 Shock absorption response function is steady and absorption efficiency is high.
- 3 Low price, narrow space installation is available.
- 4 No maintenance required, no corrosion.
- 5 Customization is possible for various sizes, forces, strokes and capacities.
- 6 Operating temperature: -40~90°C

GRAPH

IPC 2-038-030

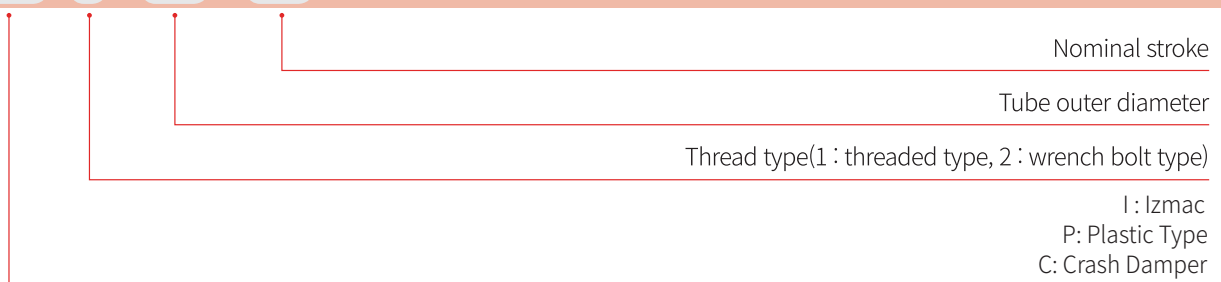


IPC 2-034-030



IPC SERIES ORDERING INFORMATION

IPC - 1 - 028 - 035



IPC20 ~ 24 Series

■ Dimensions & Engineering Data

Model	Stroke[mm]	Fn[kN]	En[J]	TD[mm]	ML[mm]	M1[mm]	L1[mm]
IPC-1-20-15	15	9.1	122.8	20	43.0	M12	10
-32-25	25	28.0	631	32	70.0	M16	15
-40-30	30	46.5	1255.4	40	85.0	M20	18
-52-40	40	82.9	2985.6	52	111.0	M30	25
-64-50	50	129.9	5,846.2	64	136.5	M36	30
IPC-2-24-30	30	15.6	420.7	24	74.5	M8 x 1.25P	14.5
-34-30	30	34.8	940	34	79.0	M12 x 1.75P	18
-38-30	30	44.6	1204.3	38	81.0	M12 x 1.75P	21
-52-40	40	88.3	3180.6	52	108.0	M16 x 2.00P	19
-64-50	50	137.5	6,187.1	64	132.5	M20 x 2.50P	23.5

